



The Village Collection is a classic series of homes by Nationwide Homes. Inspired by families and neighborhoods across the country, the series echoes a simpler time yet offers all the convenience, comfort and technological advances found in all of our homes. For more information about the Village Collection, or any other Nationwide home, please contact your local authorized builder.



The Danford

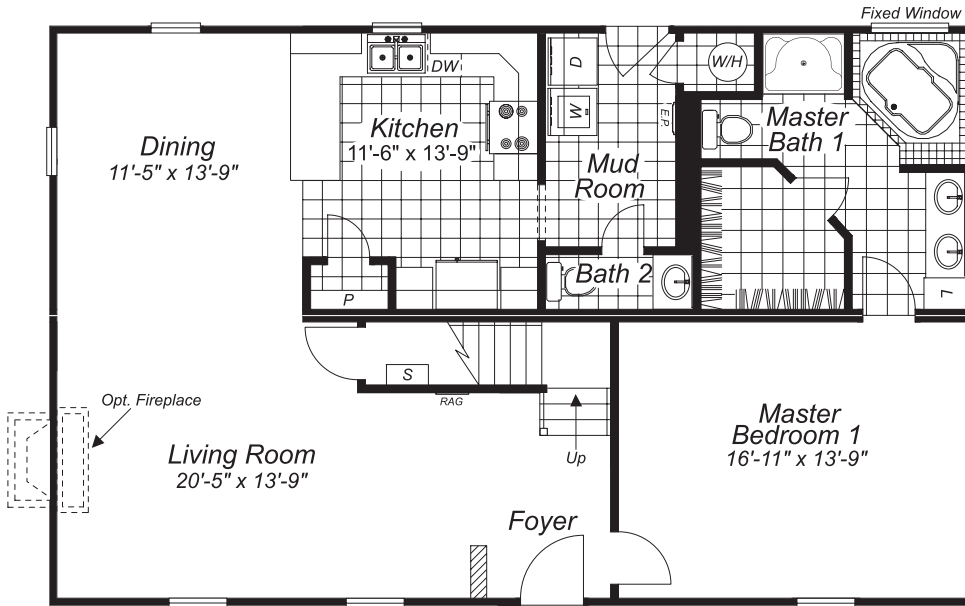
This traditional two story is practical and is loaded with many convenient features that growing families are looking for. A first floor parent hide-a-way also known as master bedroom/bath suite is showcased in this plan.

- 1,214 First floor finished square feet
- 855 Second floor finished square feet
- 2,069 Total square feet
- Dimensional area 44-0 x 27-7
- Three bedrooms, two and a half baths
- First floor master bedroom suite
- Optional front porch

THESE ARE ARTIST RENDERINGS FOR SALES PURPOSES ONLY;
REFER TO WORKING DRAWINGS FOR ACTUAL DIMENSIONS.

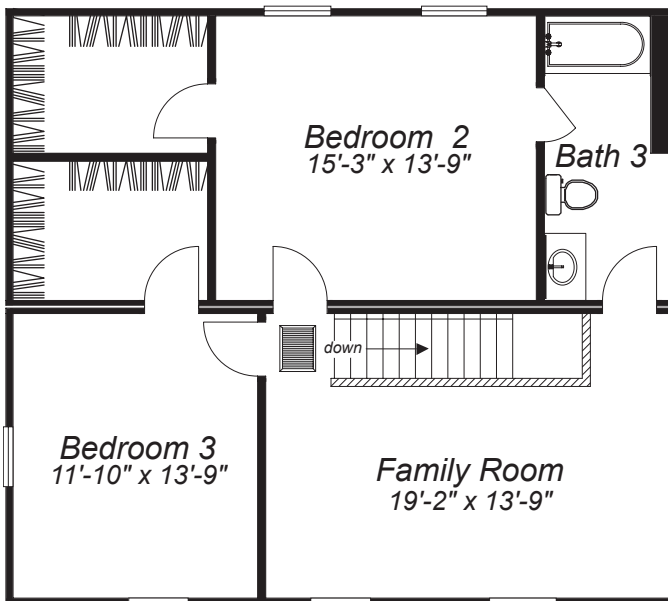
The
Village
Collection

The Village Collection



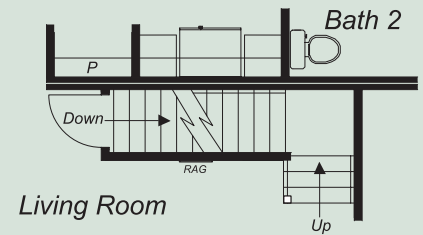
FIRST LEVEL

The DANFORD



SECOND LEVEL

Alternate Plans



Opt. Basement Plan



P.O. Box 5511
 1100 Rives Road
 Martinsville, VA 24115
 P: 276-632-7100
 F: 276-666-2537

www.nationwidecustomhomes.com